



# PINNACLE HOMES

ACCRA, GHANA





DESIGNED FOR YOU,  
BUILT BY US.



- 
- An aerial photograph of a modern residential development. The image shows several multi-story buildings with light-colored facades and flat roofs. Some roofs have large, dark, cylindrical water tanks. The buildings are arranged around a central courtyard area with paved walkways and small trees. In the foreground, there is a parking lot with several cars parked. The surrounding area is lush with green grass and numerous palm trees, suggesting a tropical or subtropical climate. The overall design is contemporary and functional.
- Gated Community
  - 6 Detached Homes
  - 7 Luxury Townhomes
  - Location: Adenta, Accra
  - 30 mins to Kotoka Airport
  - Close Proximity to Amenities
  - Elegant Finishes



# MEET THE TEAM



## **JUDE BOTCHWAY** *Executive Director*

As a top-producing realtor in Canada and a successful real estate investor, Jude is expanding his expertise into Ghana with a focus on developing luxury homes. His projects combine a keen eye for high-end design with a strong commitment to community-focused development. Jude's dedication to excellence and his innovative approach continue to drive his success in both local and international markets.



## **AKUAFRANC ESTATE** *Developer*

With over 20 years of experience building luxury properties across Ghana, Akafranc Estate has established itself as a trusted leader in the industry. Akafranc Estate is known for its unwavering commitment to excellence and a strong focus on community-centered development. Every Akafranc project blends luxury with a vision for sustainable growth, enhancing both the quality of living and the neighborhoods they serve.



## **SAMBUILD LTD.** *Architecture Firm*

Sambuild Ltd is an experienced international architectural firm known for its innovative approach to design. With a diverse portfolio spanning custom homes and commercial projects, Sambuild combines creativity with precision to deliver exceptional buildings that reflect both form and function.





## **BRENDA DANSO** *Interior Designer*

Brenda has a keen eye for creating beautiful, inviting spaces, with a deep understanding of color, texture, and design. Her passion lies in building homes that reflect her clients' vision, crafting environments that are both functional and aesthetically pleasing. With an attention to detail and a personalized approach, Brenda ensures that every project is a perfect blend of style and comfort.

---



## **JELIU SAPASCHINI** *Legal Counsel*

Jeliu is a successful real estate and business lawyer with extensive experience in all aspects of legal transactions. He is deeply committed to protecting his clients' interests, offering expert legal counsel while navigating complex contracts and negotiations. Jeliu's proactive approach ensures that his clients are safeguarded at every stage, providing peace of mind and securing successful outcomes.

---



## **IRENE ALEXANDER** *Head of Marketing*

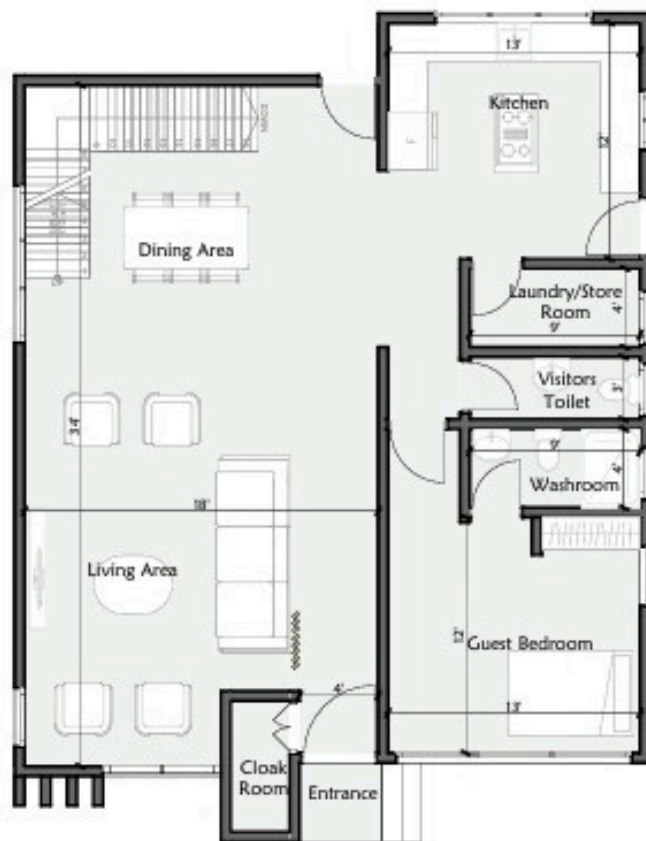
Irene has successfully developed and executed comprehensive strategies that drive sales and elevate brand presence. Her expertise spans in both digital and traditional marketing, effectively promoting properties in competitive markets. Irene's deep understanding of real estate trends allows her to craft targeted campaigns that resonate with prospective clients, ensuring maximum exposure.



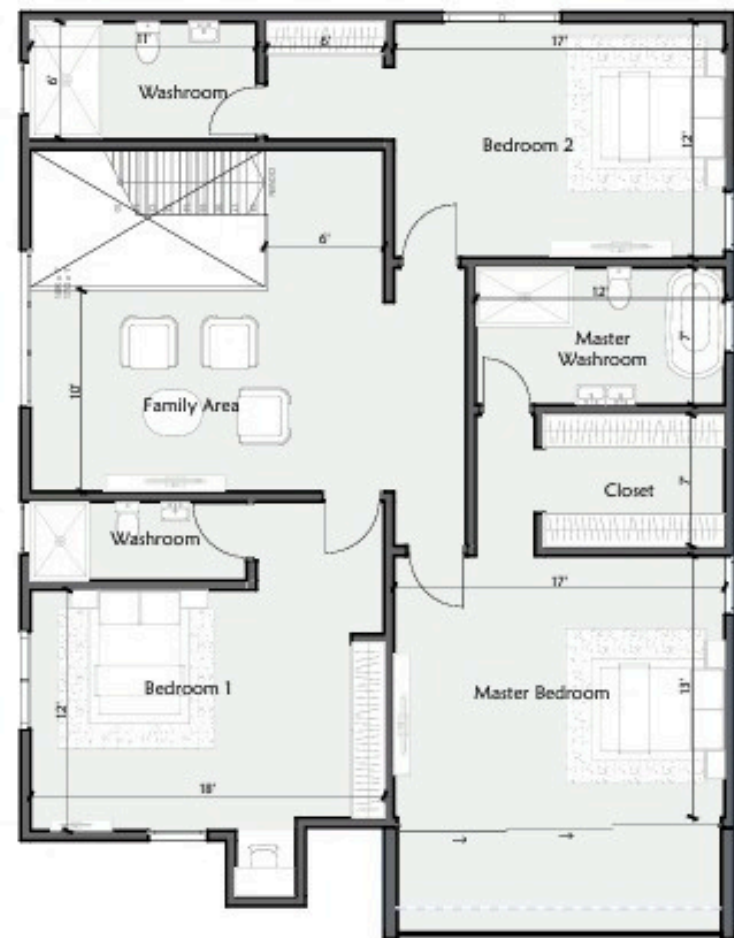


DETACHED HOMES  
STARTING FROM \$219,900 USD





GROUND FLOOR



FIRST FLOOR

- 4 Bedrooms
- 4.5 Bathrooms
- 3 Car Parking
- Backyard
- 257 Sqm
- 2767 Sq Ft
- 10 Ft Ceiling
- Security











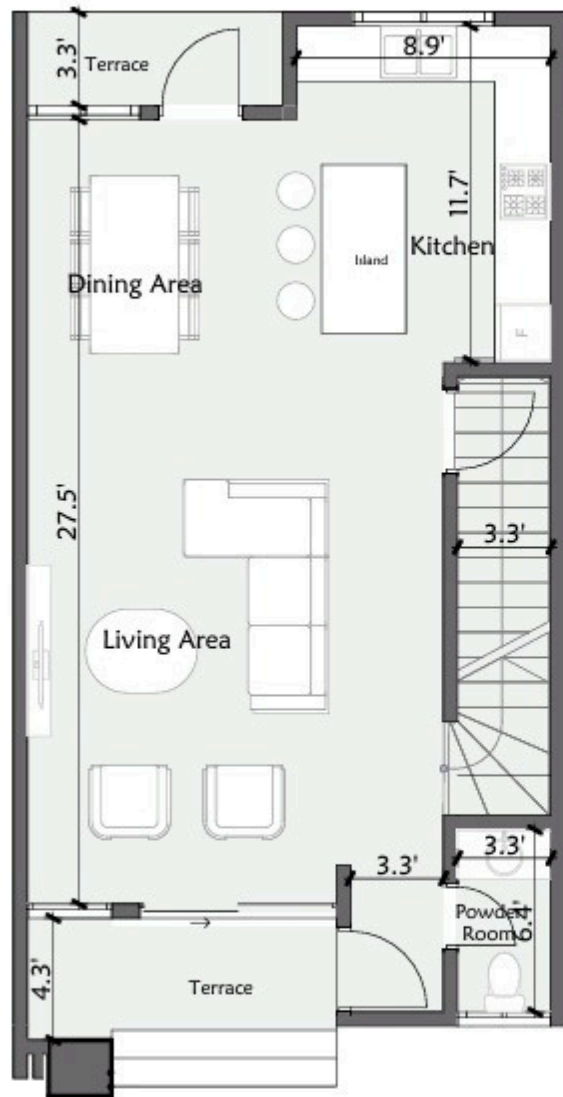




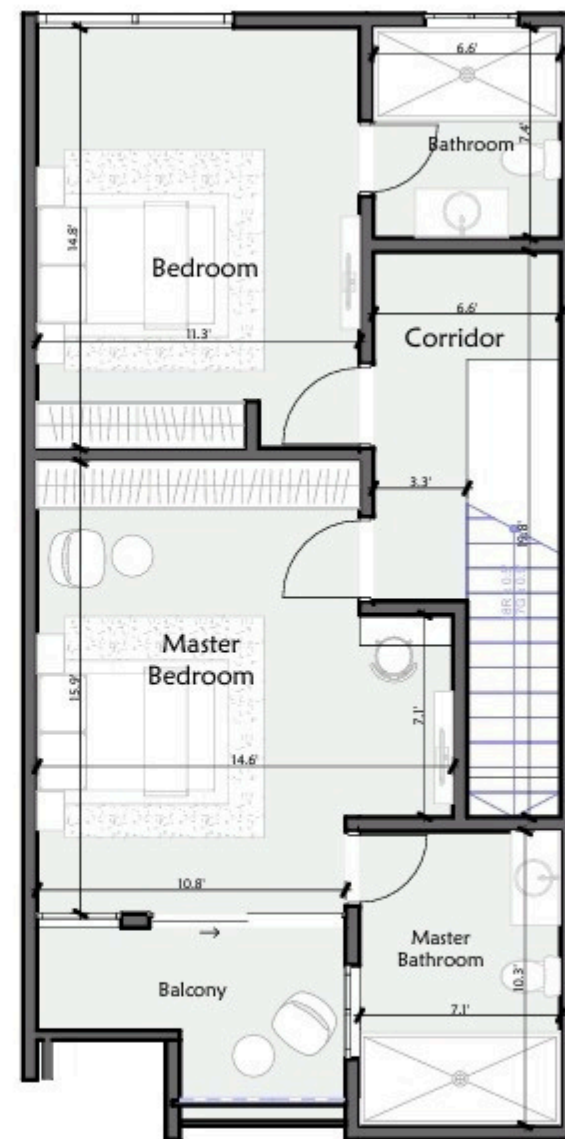
TOWNHOMES  
STARTING  
FROM  
\$129,900 USD







Ground Floor Plan



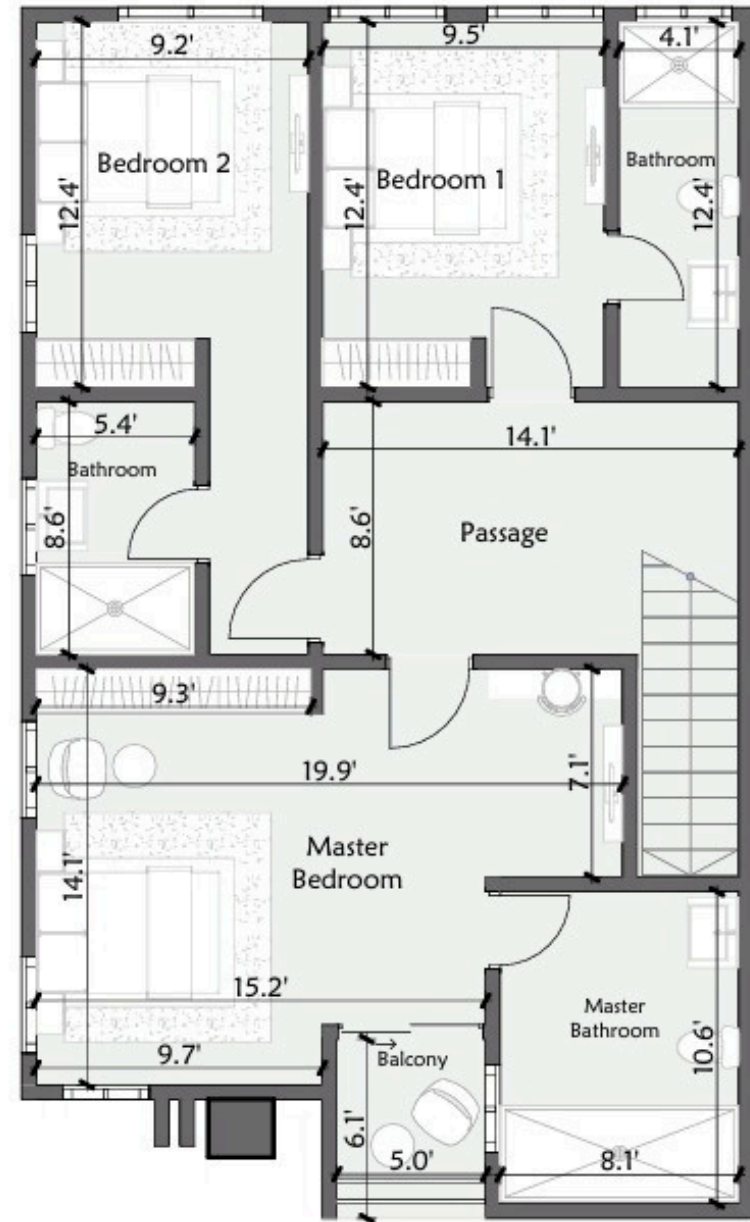
First Floor Plan

- 2 Bedrooms
- 2.5 Bathrooms
- 2 Car Parking
- Backyard
- 139 Sqm
- 1496 Sq Ft
- 10 Ft Ceiling
- Balcony





Ground Floor Plan



First Floor Plan

- 3 Bedrooms
- 3.5 Bathrooms
- 2 Car Parking
- Backyard
- 153 Sqm
- 1656 Sq Ft
- 10 Ft Ceiling
- Balcony











# PAYMENT STRUCTURE

## TOWNHOMES - From \$129,900 USD

- \$5,000 with the offer
- 40% of the purchase price minus the initial deposit within 10 days
- 40% of the purchase price within 90 days
- 20% at occupancy
- Move in 4-6 Months

## DETACH HOMES - From \$219,900 USD

- \$5,000 with the offer
- 20% of the purchase price minus the initial deposit within 10 days
- 20% of the purchase price within 90 days
- 20% of the purchase price within 180 days
- 20% of the purchase price within 280 days
- 20% at occupancy
- Move in 12-14 Months





Designed for you,  
Built by us.

Jude Botchway  
**Executive Director**  
Tel: 416-844-6846

Francis Akuaku  
**Principal Developer**  
Tel: 233 24 462 3376